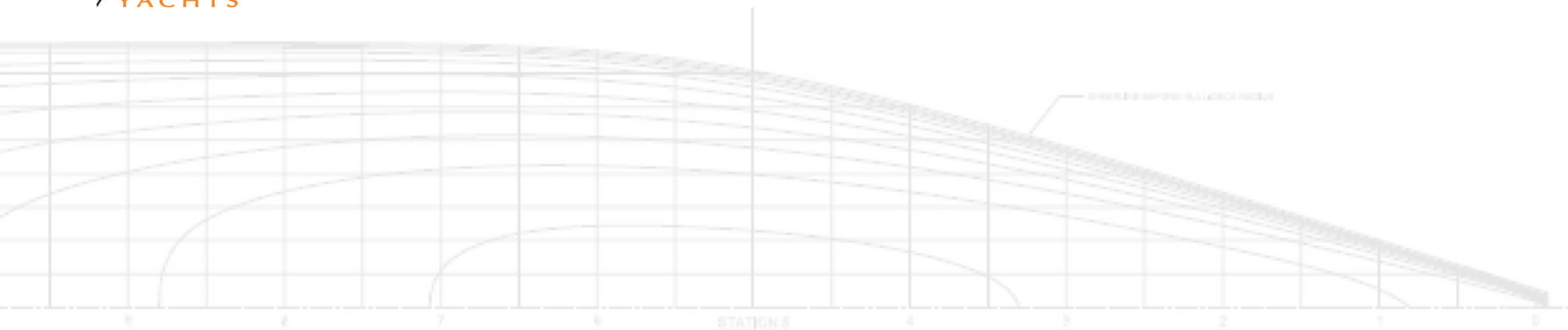


# X-Treme 32



# INTRODUCTION

Why the X-Treme 32, you may ask...

The answer is simple! We wanted to create a top quality offshore racer while keeping in mind handicap systems. Because rules change and often reduce the design lifespan of a race yacht, we decided to go the other way around, making ultimate thrills and performance a priority, and shaving afterwards the TCC / GPH down. And we succeeded!

The X-Treme 32 boasts a TCC of 1.164 and a GPH of 520.3. That might be considered a lot for a 32' racer, however she is not just fast, she is very fast and demonstrates performances never shown on the water before by any 32 feet fixed keel monohull. Furthermore, she complies with CE A regulations (inboard engine version).

We worked closely with Reichel/Pugh, with whom we developed our full carbon and overall winning X-Treme 37 and appreciated their commitments to turning ideas and wishes into racing machines.

The result speaks for itself. The X-Treme 32 is a flat-out racer, built in vinylester sandwich, with rod rigged carbon spars, and can be equipped with an optional 12 inboard diesel engine or an electric inboard motor.

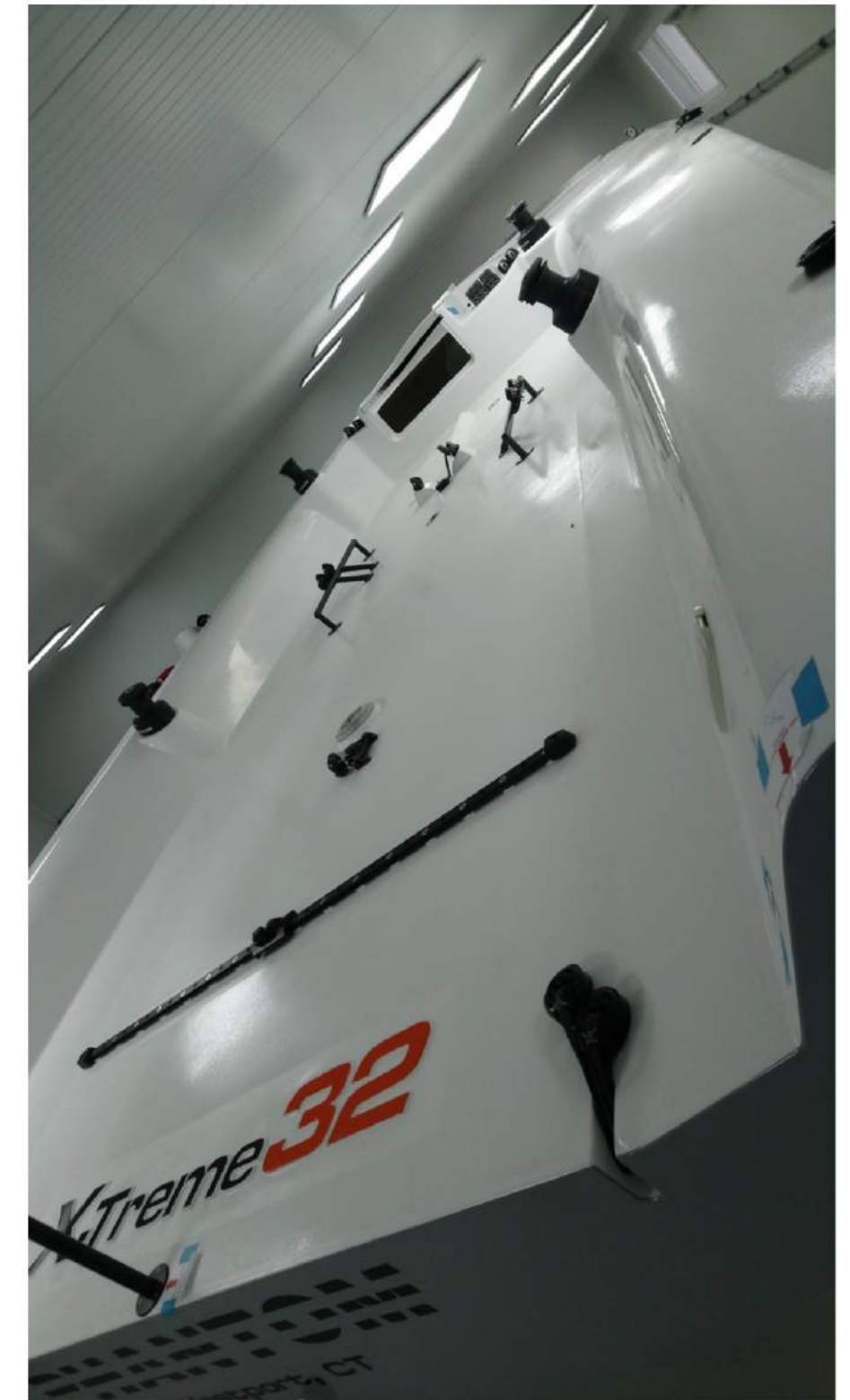
The X-Treme 32... Built to last... Built to win... At the cutting edge of high performance yacht racing.

**We are proud to launch an all-around racer that is beyond smart on all levels**



# **X-Treme32** #tickingallboxes

- ✓ Line honours potential
- ✓ IRC winning potential
- ✓ ORC winning potential (Class B)
- ✓ Fastest 32' fixed keel monohull
- ✓ Inshore racing
- ✓ Offshore racing
- ✓ Distance racing (CE A category)
- ✓ Sportsboat thrills
- ✓ Container transportable
- ✓ Optional customized container
- ✓ Optional road trailer
- ✓ Optional solar panelled hardtop dodger
- ✓ Optional electric motor



# SPECIFICATIONS

LOA	: 9.95 m / 32.64 ft
LWL	: 9.43 m / 30.94 ft
Beam	: 3.16 m / 10.38 ft
Draft	: 2.45 m / 8.04 ft
Disp.	: 2.000 kgs / 4,409 lbs
Disp. diesel:	2.260 kgs / 4,982 lbs
IM	: 13.32 m / 43.70 ft
J	: 4.00 m / 13.12 ft
ISPS	: 15.12 m / 49.61 ft
P	: 13.70 m / 44.95 ft
E	: 4.77 m / 15.65 ft
UWSA	: 70.1 sqm / 755 sqft
DWSA	: 178.4 sqm / 1,921 sqft

# CONSTRUCTION

A full optimized structural design using advanced CNC techniques

- Design and constructed in accordance to ISO structural regulations to Class A with plan approval by Eurocontrol (inboard engine version)
- The hull and deck constructed from vacuum consolidated e-glass/vinylester/ foam sandwich
- Additional reinforcements in way of all deck fittings and other highly loaded area's
- The structural internals from vacuum consolidated e-glass/vinylester/foam with sandwich construction uni-directional and carbon fibre reinforcement
- Non structural internal components are built from e-glass/vinylester/foam sandwich construction

Exterior and interior finish:

- Gelcoat grey hull (RAL 7040)
- Paint finish Non-skid areas on deck
- Cockpit Floor: Non-skid paint in white
- Interior: Living area satin white, other areas light weight peel ply racing finish







# RIG AND DECK

## SAFETY ON DECK

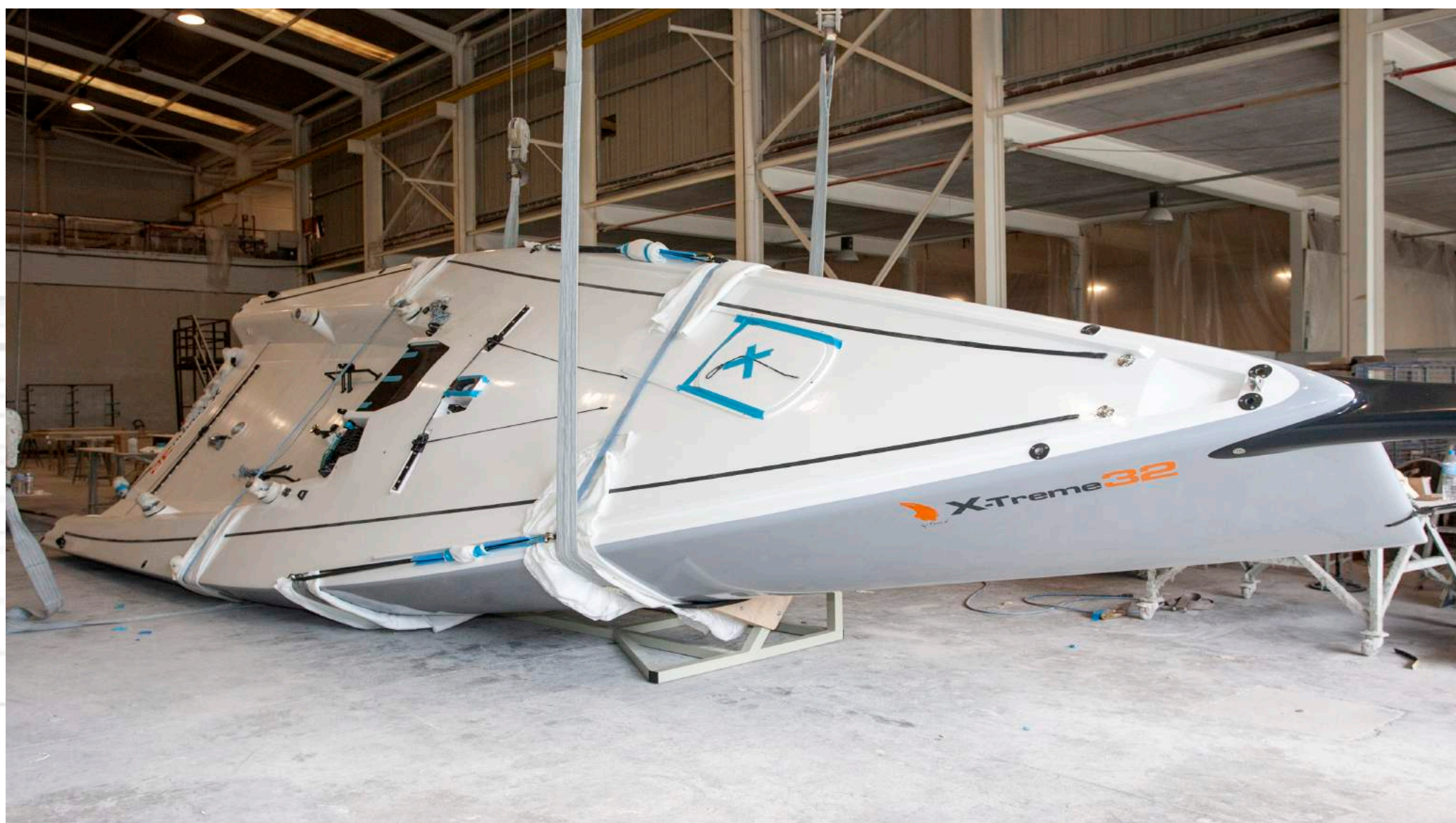
- 1 double pulpit (optional carbon fibre)
- 1 pushpit (optional carbon fibre)
- Double life line with stanchions (optional carbon fibre)
- 1 CL stanchion aft
- Foredeck toe rails
- Foot rests with underdecks control lines for traveller and outhaul

## KEEL, FIN AND BULB

- CNC milled aluminium T6 keel fin accordance to ISO structural regulations.
- Class A with plan approval by Euromed
- Lead T-Bulb
- Highly structurally efficient carbon reinforced spider grid transferring keel loading to boat structure
- Fin and Bulb are delivered faired, primed and top-coated.

## STEERING SYSTEM

- Prepreg carbon rudder stock
- Epoxy foam cored, carbon skin rudder blade
- Vacuum bagged vinylester tiller + Spinlock tiller extension (optional carbon fibre)
- JP3 upper and lower self-aligning rudder bearings





# HARKEN DECK HARDWARE

## MAINSHEET SYSTEM

Block on car	57mm T2 Single Carbo block
Turning block on boom end	57mm T2 Carbo double block
Turning block at fwd bail	57mm T2 Carbo double block
Gross trim block at deck	57 Carbo T2 auto ratchet
Fine trim block at fwd bail	Ball bearing swivel mainsheet
Fine trim block at fwd bail	40mm T2 double Carbo
Fine trim cl block at deck	40mm T2 single Carbo
Fine trim block at deck	40mm T2 single Carbo

## TRAVELLER SYSTEM

Track	MR 27mm beam track pin stop
Car	MR 27mm CB loop car
4:1 purchase block	40mm Carbo double swivel
Deflector blocks	40mm T2 single Carbo

## JIB SHEET SYSTEM

Track	MR 27mm beam track pin stop
Car	MR 27mm CB loop car
Fairlead on deck	Jib sheet fairlead small
Cross winch	Spinlock winch feeder

## JIB UP-/DOWNSYSTEM

FWD block	57mm loop block
8:1 FWD block	40mm Carbo Quad
8:1 aft block	40mm Carbo triple
Deflector blocks	29mm T2 single Carbo

## SPINNAKER SYSTEM

Spreacher block	57mm T2 double Carbo
Deflector block on deck	57 Carbo T2 auto ratchet
Tackline clutch	Spinlock double

## TOPMAST AND BACKSTAY

Deck blocks	57mm black magic
Runner block	75mm runner block becket

## WINCHES

Performa alu	4x 40 series self tailing
--------------	---------------------------

# RUNNING RIGGING

## HALYARDS

Main halyard 1:1	D2 Grand Prix 78 10mm grey
Jib 1	D2 Grand Prix 78 10mm blue
Jib 2/topping	D2 Grand Prix 78 10mm red
Spi 1	D2 Racing 10mm red
Spi 2	D2 Racing 10mm yellow

## SHEETS

Jib sheets	D2 Grand Prix 78 10mm blue
Main sheet	D2 Racing 10mm black
Mainsheet fine tune	Excel Fusion 7mm black
Tackline	D2 Grand Prix 78 10mm green
Y bridle spi sheet	Excel D12 5mm red
Spi sheet	D2 Racing 10mm red

## CONTROL LINES /LIFELINES / HIKING RAIL PROTECTORS

Vang cascade	M-Rig Max 8mm black
Vang cascade	Excel D12 6mm black
Vang control	Excel Fusion 6mm black
Traveller control	Excel Fusion 6mm blue
Jib downhaul	Excel D12 6mm black
Jib inhaul	Excel D12 6mm black
Jib inhaul control	Excel Fusion 6mm red
Runners	M-Rig Max 8mm black
Runners control	D2 Grand Prix 78 10mm blue
Outhaul cascade	Excel D12 6mm white
Dyneema lifelines	6mm black
Dyneema lashing	Excel D12 4 mm black





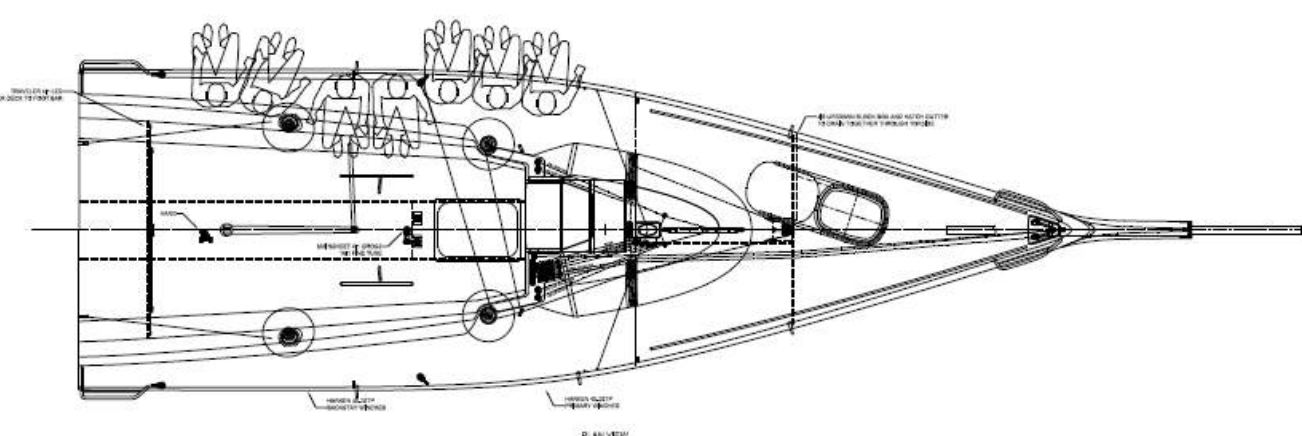
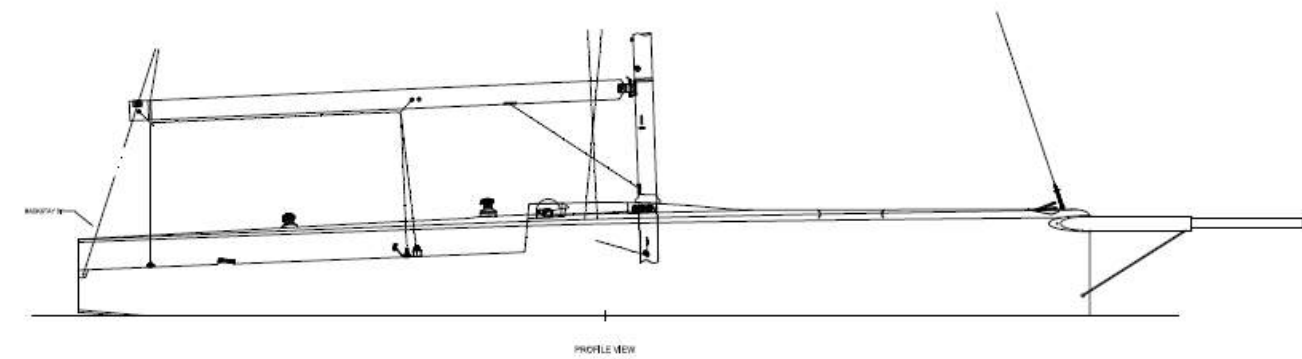
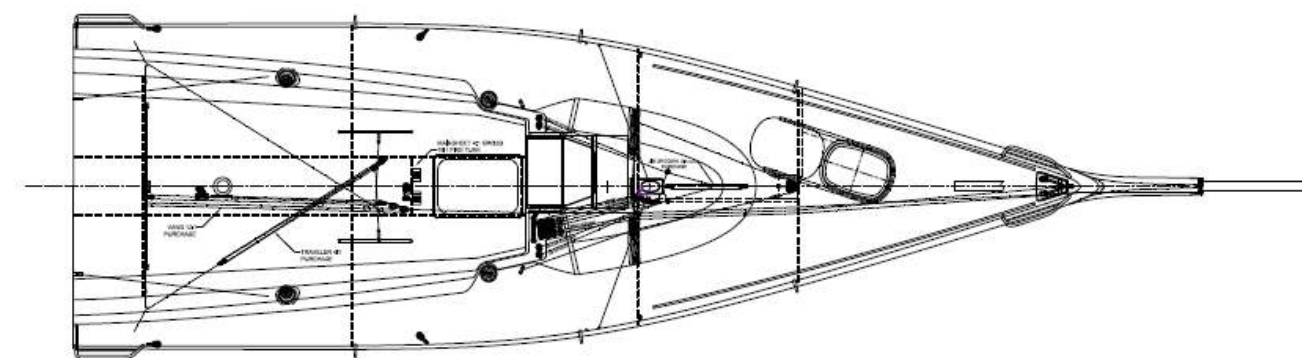
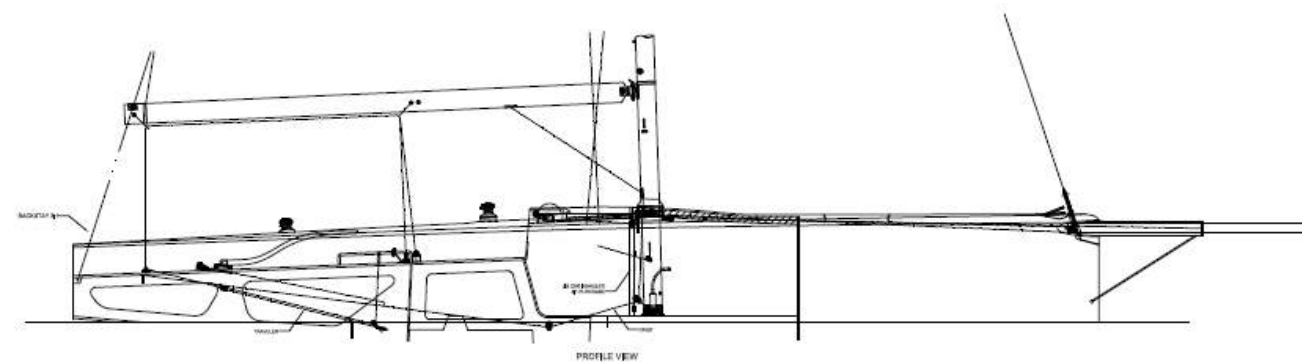
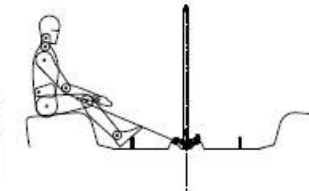
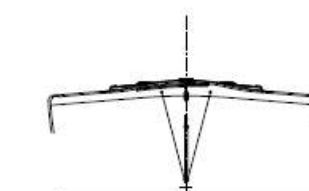
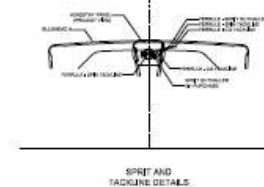
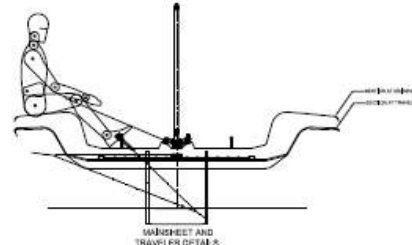
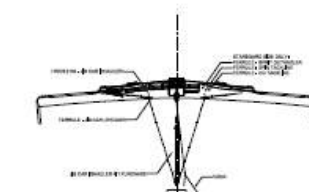
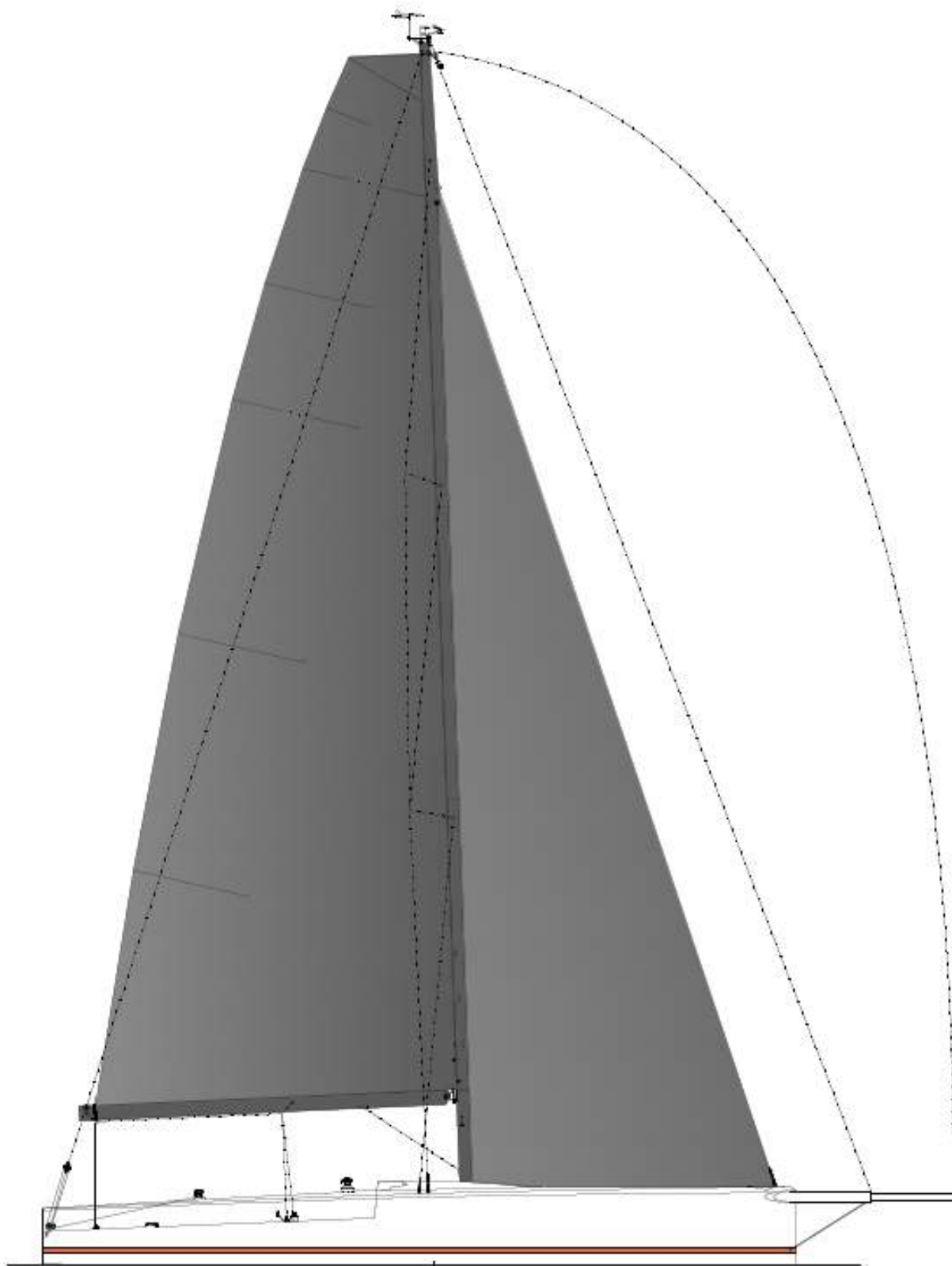


# SAIL & DECK PLAN

TRANSOM AFT OF ST 5 = 51.83

DECK DABBER CL INTERSECT 104

STATION SPACING = 1402



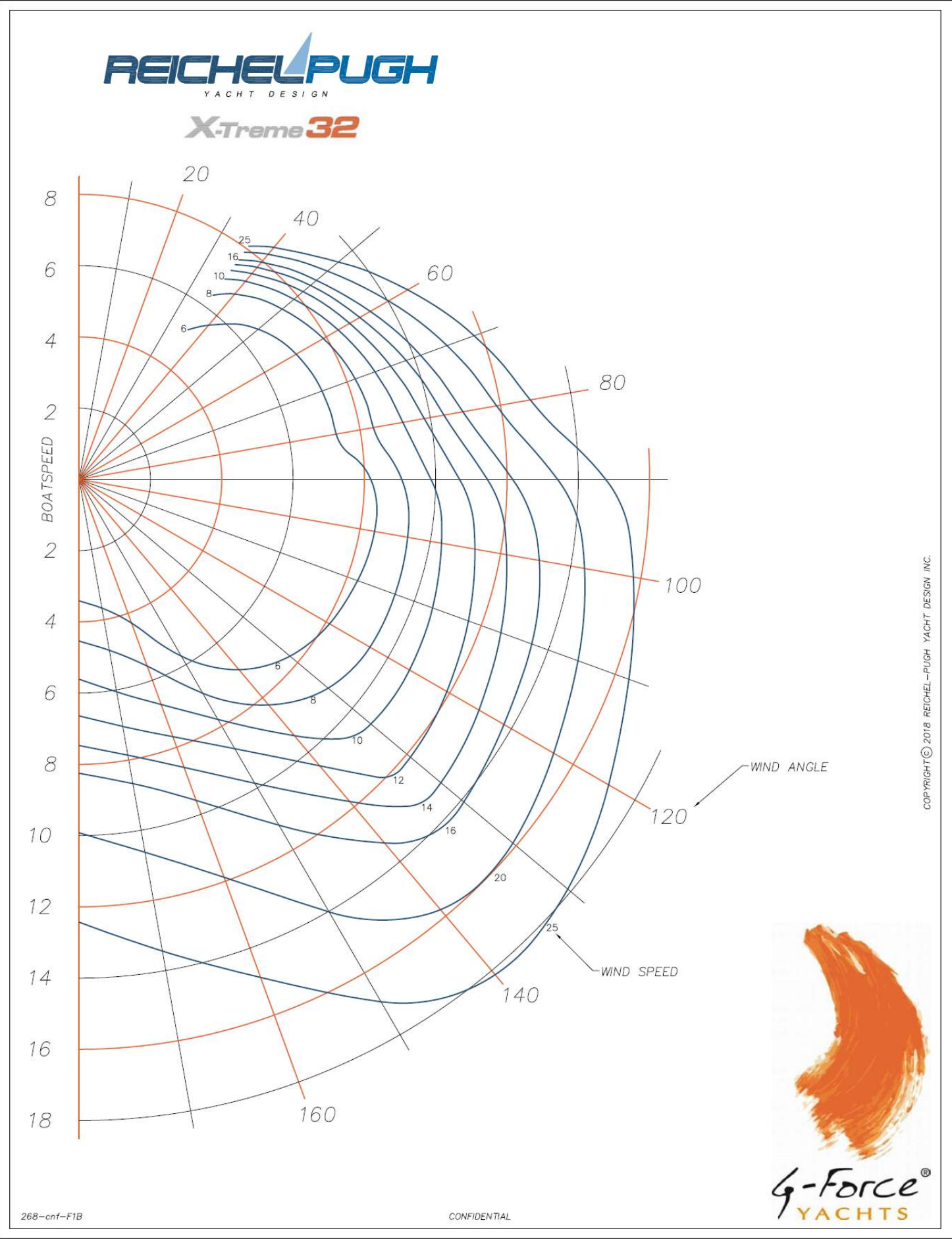
STATION







POLAR DIAGRAM



Best Boatspeeds (kt)

	6	8	10	12	14	16	20	25
36	5.19	6.39	6.95	7.25	7.45	7.62	7.88	8.09
40	5.65	6.79	7.26	7.54	7.77	7.96	8.25	8.50
45	6.17	7.16	7.58	7.88	8.13	8.35	8.68	8.96
52	6.68	7.54	7.98	8.32	8.60	8.83	9.27	9.73
60	7.03	7.91	8.39	8.76	9.09	9.43	10.02	10.64
70	7.25	8.24	8.83	9.30	9.76	10.19	10.98	11.79
75	7.30	8.34	9.03	9.57	10.08	10.56	11.45	12.33
80	7.32	8.38	9.22	9.83	10.39	10.93	11.89	12.85
90	8.18	9.05	9.87	10.67	11.45	12.16	13.42	14.77
110	8.31	9.43	10.55	11.62	12.59	13.51	14.89	16.41
120	8.11	9.42	10.70	11.91	12.95	13.76	15.37	17.15
135	7.40	8.76	10.30	11.82	12.98	14.04	15.98	18.14
150	5.73	6.93	7.78	8.73	9.85	11.21	14.02	16.93
165	3.91	5.16	6.36	7.33	8.18	9.05	11.17	14.10
180	3.41	4.54	5.61	6.64	7.47	8.25	9.92	12.43
Up.Vs	6.01	6.68	6.95	7.13	7.29	7.47	7.84	8.15
Up.Bt	43.30	38.70	36.00	34.50	34.10	34.20	35.50	36.50
Up.Vmg	4.37	5.21	5.62	5.87	6.04	6.17	6.38	6.55
Dn.Vs	6.90	8.08	9.84	11.47	12.74	13.80	16.02	18.32
Dn.Bt	142.00	142.10	138.30	138.80	140.60	139.00	144.30	146.10
Dn.Vmg	5.44	6.37	7.35	8.63	9.85	10.41	13.01	15.20



## IRC DESIGN TRIAL

This certificate is for information purposes only and is based solely on the design information provided. Following measurement of the yacht as built, any variation in measured values, construction and/or fitout may result in variation in the valid TCC. Annual changes to rating calculation may also affect TCC

IRC RATING AUTHORITY: RORC Rating Office - info@rorcrating.com UNCL Centre de Calcul - irc@uncl.com



<b>Boat:</b>		<b>Stability</b>	
Name:	TRIAL X-TREME 32	SSS Number:	15
Sail Number:	NA	STIX:	N/A
Cert No	43596	AVS:	N/A
<b>TCC:</b>	<b>1.164 2018</b>	ISO/IRC Design Category:	N/A
Crew No.:	7 (595 kg)	ISAF Plan Review:	

<b>General Details</b>		Series Date: 2018	Hull Factor:	12.6
Design:	X-TREME 32 2.45	Age Date: 2018	Rig Factor:	1.019
Type:	Bermudian Sloop			
Issue:	Design trial 18-02 LH, boat weight, beam, overhangs, J (corrected overhangs)			
Notes:	Design/builder data; keel fin = aluminium			
Notes:				

Hull		Overhangs		Rig & Mainsail		Headsail		Mizzen		Spinnaker	
LH:	9.95	BO:	0.00	P:	13.70	HSA:	25.86	PY:	0.00	SPA:	140.00
LWP:	9.51	x:	0.00	E:	4.77	HLUmax	13.50	EY:	0.00	STL:	6.37
Hull Beam:	3.16	h:	0.00	J:	4.00	HLU*:	13.50	LLY:	0.00	SLU*:	-
Boat Weight:	2000	SO:	0.44	FL:	13.85	HLP*:	3.83	LPY:	0.00	SLE*:	-
DLR:	85	y:	0.04	MUW:	1.52	HHW*:	1.91			SFL*:	-
Draft:	2.45			MTW:	2.13	HTW*:	0.94			SHW*:	-
Bulb weight:	880			MHW:	3.15	HUW*:	0.48				

\* For information only

<b>Detail</b>	No Spinnaker TCC: 1.111
Low vgg comp+bulb keel	Multiple headsails permitted
No wing keel	Maximum number of spinnakers carried: 3
Inboard engine : Weight 96kg	Bowsprit only
2 blade folding/feathering propeller	2 Spreader/Jumper (sets)
Internal ballast 0 kg	1 Aft Rigging (Sets)
Weight includes batteries/cushions	Carbon Mast
World Sailing OSR compliant lifelines fitted	Rod standing rigging
Manual power only for running rigging	HSA=0.0625*HLU*(4*HLP+6*HHW+3*HTW+2*HUW+0.09)
No variable/moveable ballast carried	SPA=((SLU+SLE)/2)*((SFL+(4*SHW))/5)*0.83
Mast foot/forestay not adjusted while racing	

Certificate issued by the IRC Rating Authority and VALID from 12 Mar 2018 11:57:42  
Expires 31 Dec 2018 unless superseded or invalidated by IRC Rules and Regulations  
I accept the dimensions shown on this certificate and agree to report all subsequent changes and any errors found at a later date to the issuing Authority

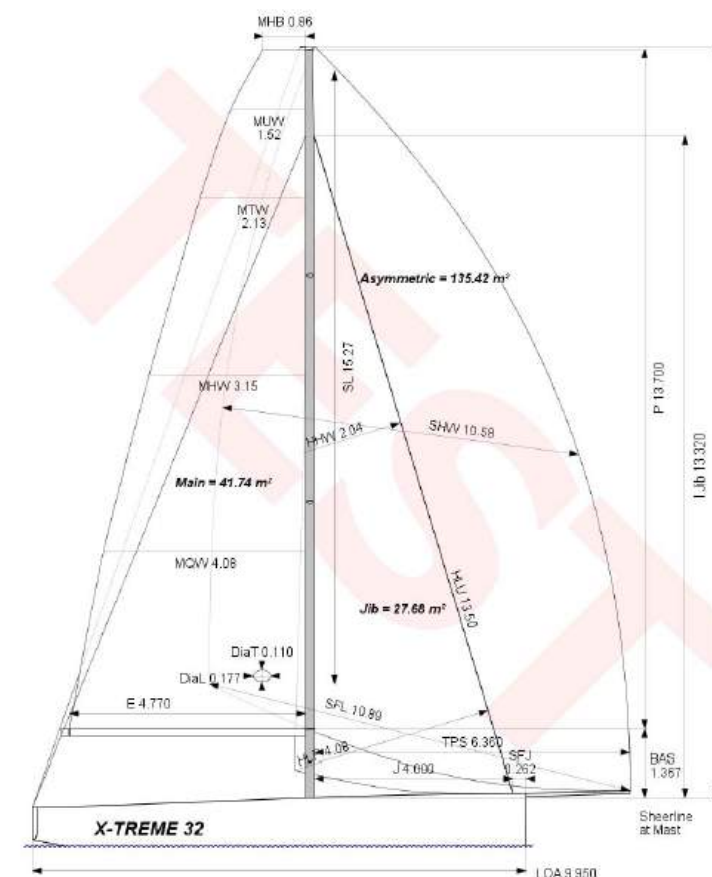
Seahorse  
Magazine

Your free subscription to Seahorse is  
at: www.seahorse.co.uk/digital.  
Your passcode is: 53869

STANDARD

(C) RORC/UNCL 2018

www.ircrating.org



<b>BOAT</b>	<b>GPH</b>	<b>HULL</b>
Name X-Treme 32	520.3	Data File 268-h2
Sail Nr		Offset File 268-h2.OFF
		Displacement 2,002kg
		LOA 9.950m
		MB 3.164m
		Draft 2.450m
		IMS Performance
		Fwd Accom. No
		Fiber No
		Crew Arm 0.00
		Dynamic All. 0.000%
		Construction Cored
		Aramid Core No
		Carbon Rudder Yes
		Light No
		IMS 9.975m
		VCGD -0.590m
		Sink 14.75kg/mm
		RL 11.128m
		VCGM -0.590m
		WS 18.53m²
		LSM 9.677m
		Displacement/Length 2.2092
		Water 0
		Trim Tab No
		BLR Index 0.000
<b>COMMENTS</b>		
<b>PROPELLER</b>		<b>CENTERBOARD</b>
Installation Strut	PRD 0.410	
Type Folding 2 blades	PIP 0.0034	N/A
<b>SCORING OPTIONS</b>		
	<b>COASTAL / LONG DISTANCE</b>	<b>WINDWARD / LEEWARD</b>
Time on Distance	505.5	569.2
Time on Time	1.1869	1.1858
Triple Number	Low Medium High	Low Medium High
Time on Distance	592.7 465.4 396.3	759.3 580.3 485.8
Time on Time	1.1389 1.4503 1.7031	0.8890 1.1632 1.3896

© Offshore Racing Congress 2018  
www.orc.org



2018 (Test)  
ORC Club  
Certificate

Rating Office  
Designer Data Designer  
Data Designer Data  
Designer Data

INVALID  
FOR  
RACING

Certificate

Number  
Issued On 3/7/2018  
ORC Ref N/A  
VPP Ver. 2018 1.00  
Invalid for Racing

Crew Weight

Default 657kg  
Maximum 650kg  
Minimum\* 488kg  
\*when applied by the NoR and SI  
Non Manual Pwr

Special Scoring

ToD ToT  
Non Spin 566. 1.0593  
Non Spin 551. 1.0880

Sails Limitations

Headsails 6 Spinnakers 4

Spinnaker configuration  
Symmetric: No  
Asymmetric: Ye 135.42  
Flying H/S: No  
Spin. Pole: No

Class Division Length

CDL = 10.553

Stability (Estimated)

Limit Positive 129.1  
Stability Index: 123.1

Owner

I certify that I understand my

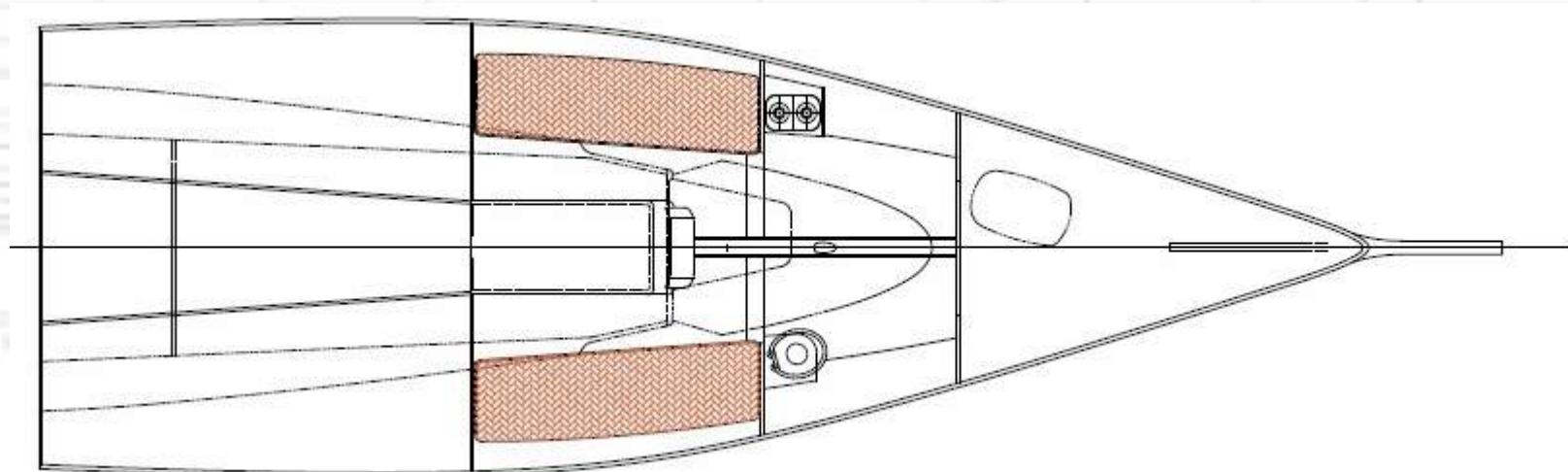
responsibilities under ORC Rules and

Regulations

Signature



# INTERIOR



## ELECTRICAL

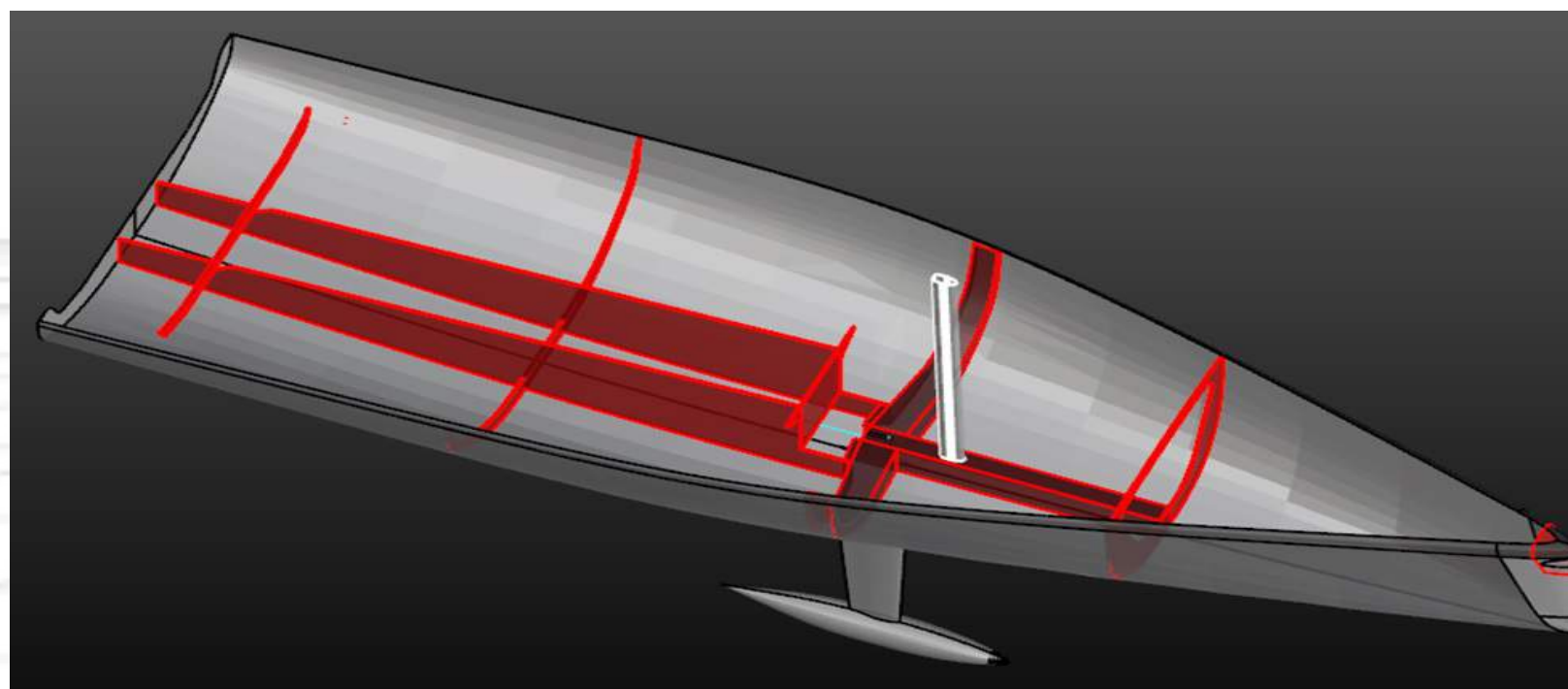
- 2x red/white cabin lighting in saloon
- 1x House Batteries
- 1x Engine Battery (with inboard)
- Navigation Lights

## PLUMBING

- Lightweight head
- 2x electrical bilge pumps
- 1x manual bilge pump

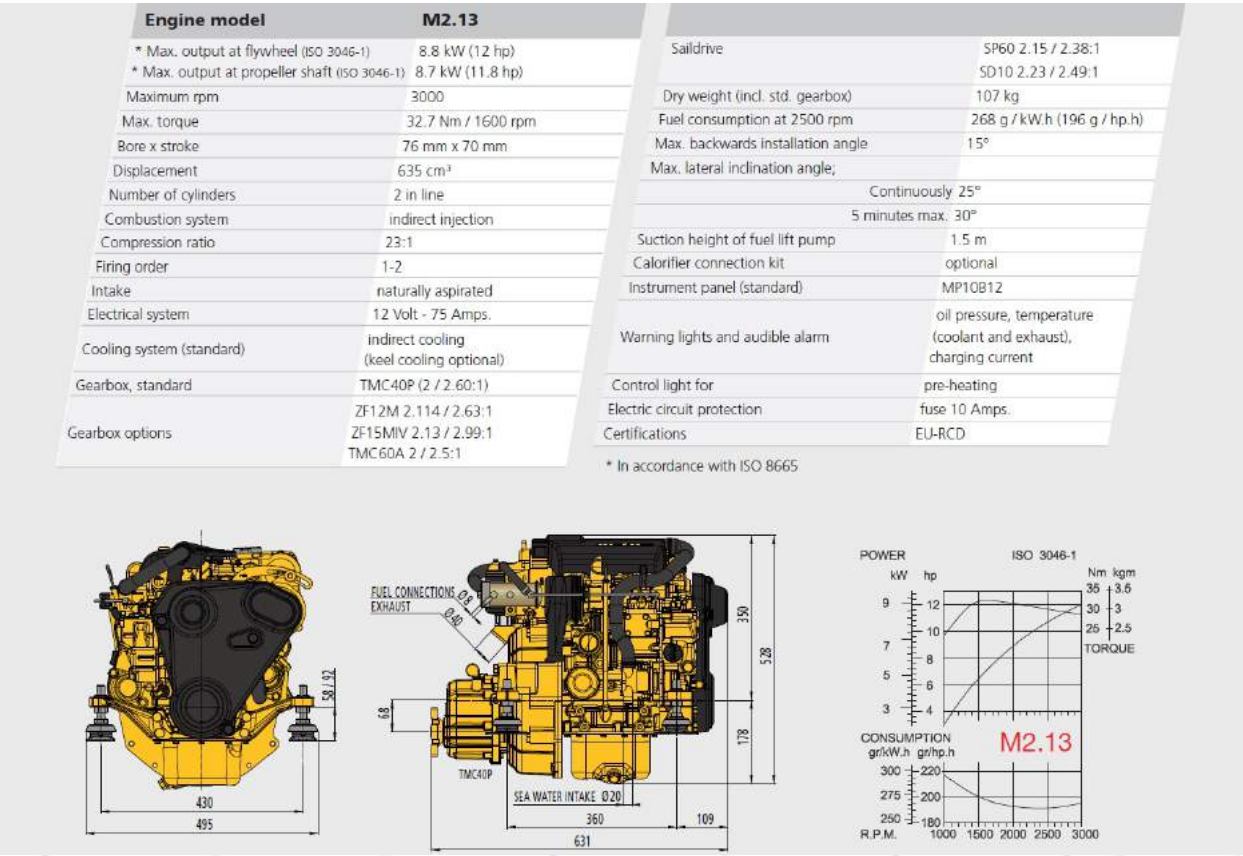
## INTERIOR

- Engine box with integrated bottom steps
- Grab handles in bunks
- 2 bunks





# DIESEL PROPULSION



The X-Treme 32 can be equipped with an optional 12 hp (8,8 kw) inboard Vetus Diesel engine (tank capacity of 40 litres, fuel consumption of 2,85 litres per hour at 2500 rpm (268 g / kW.h)).



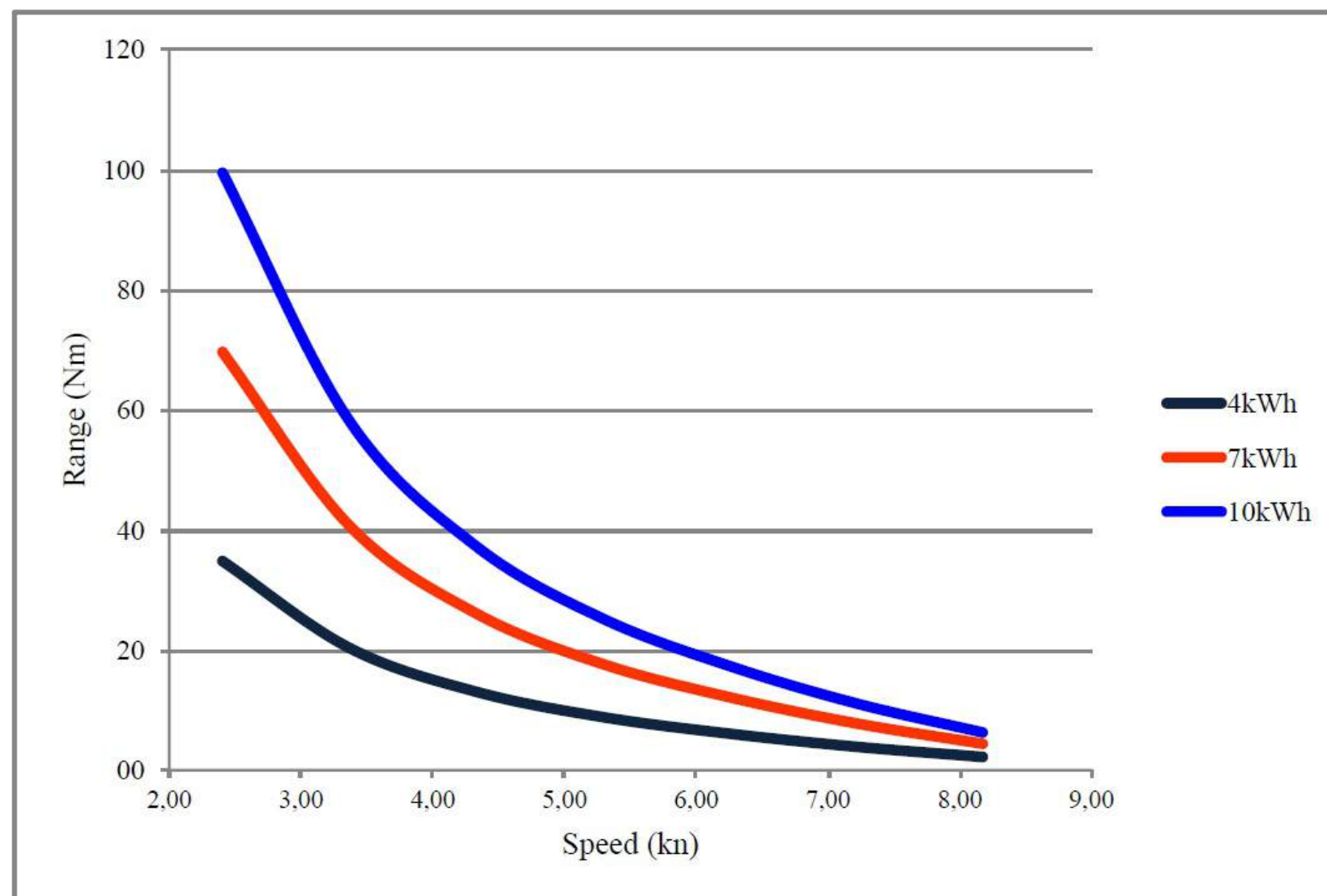




# RESISTANCE PREDICTION AND ELECTRIC POWER ESTIMATOR FOR SAILING YACHTS

Version 2.1.1

X-Treme 32



Speed [kn]	P bat [kW]	Range Bat A [Nm]		Range Bat B [Nm]		Range Bat C [Nm]	
		Flat water	Seamargin	Flat water	Seamargin	Flat water	Seamargin
2,40	0,22	34,8	26,1	69,6	52,2	99,4	74,6
3,37	0,52	20,4	15,3	40,7	30,6	58,2	43,7
4,33	1,04	13,1	9,8	26,1	19,6	37,3	28,0
5,29	1,89	8,8	6,6	17,7	13,3	25,2	18,9
6,25	3,24	6,1	4,6	12,1	9,1	17,4	13,0
7,21	5,83	3,9	2,9	7,8	5,8	11,1	8,3
8,17	11,72	2,2	1,6	4,4	3,3	6,3	4,7

Battery A  
4kWh

Battery B  
7kWh

Battery C  
10kWh



CE2006  
N° 83980

GH  
943805660

2X5t

TORMUND





# LOGISTIC OPTIONS

For transportation, we have worked on several options:

1. A customized 40' High Cube container, with open side, which will be equipped with:
  - Canting cradle on rails to load and unload the hull easily
  - Bed for the keel, which can be fixed and removed easily
  - Work bench with drawers for tools
  - Solar panel on the roof of the container and batteries for electric tools, light...
  - Custom paint with logo in any colour the client requires for the exterior

Clients who order the X-Treme 32 with container will get a lifelong "G-Force Yachts Logistic support". The owner of a X-Treme 32 sends us an email with a request to ship his container anywhere in the World with the race dates. Our logistic partner will reply to the owner, pick up the container, ship it over and take care of all needed documentation. This at logistic cost price.

2. A multifunctional foldable cradle for truck / container transportation
3. Customized road trailer



Customized container



Multifunctional shore cradle



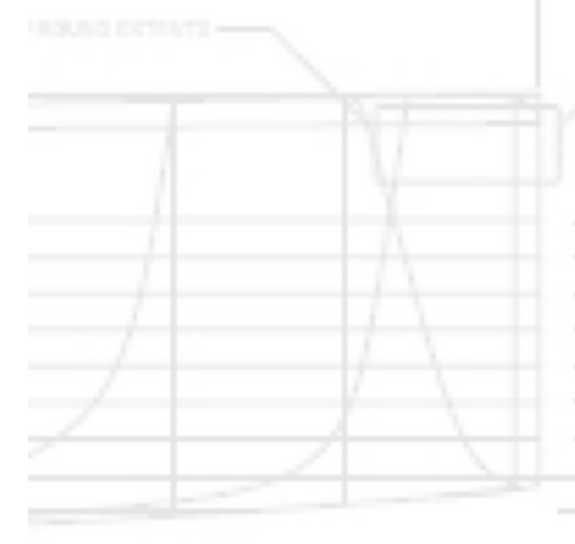
Customized road trailer





# TRACK RECORD

2006:	X-Treme 37	- handicap and line honours in the Cape to Bahia ocean race
2009:	X-Treme 25	- 2 <sup>nd</sup> place IRC fleet in the Hamble winter series, UK
2009:	X-Treme 25	- overall winner of the Classico Alberto, Italy
2010:	X-Treme 25	- line honours in the Lidingö Runt, Sweden
2011:	X-Treme 25	- winning Best Boat Award by Sail Magazine USA
2012:	X-Treme 37	- 2 <sup>nd</sup> place in the BVI Spring regatta, Caribbean
2013:	X-Treme 37	- overall winner of the Grenada Sailing Week, Caribbean
2013:	X-Treme 37	- overall winner of the OD ORC Cup Bregenz, Switzerland
2013:	X-Treme 37	- line honours in the Rundum Bodensee, 3 <sup>rd</sup> in ORC-Club class 1, Switzerland
2014:	X-Treme 37	- winner of the CSA Racing class Grenada Sailing Week, Caribbean
2014:	X-Treme 37	- overall winner of the Montfort Cup, Switzerland
2014:	X-Treme 37	- winner of the Internationale ORC Bodensee MS Short track 2014, Switzerland
2015:	X-Treme 25	- winner of the LCYC winter distance regatta, Canyon Lake, Texas, USA
2015:	X-Treme 25	- winner of L'inverna a Belgirate regatta, Maggiore Lake, Italy
2015:	X-Treme 37	- winner of the CSA Racing class and 2 <sup>nd</sup> place overall, Antigua Sailing Week, Caribbean
2015:	X-Treme 37	- 3 <sup>rd</sup> place of the Jeff Campana Trophy, CSA Racing class, Caribbean
2015:	X-Treme 25	- 2 <sup>nd</sup> place Mango Bowl regatta, CSA Racing class, Caribbean
2016:	X-Treme 37	- 3 <sup>rd</sup> place of the Grenada Sailing Week, CSA Racing class, Caribbean
2017:	X-Treme 26	- nomination 2017 Yachts and Yachting Award, UK
2017:	X-Treme 37	- 2 <sup>nd</sup> place of the Grenada Sailing Week, CSA Racing class, Caribbean
2017:	X-Treme 37	- winner IRC1 class, RORC 600, Caribbean
2017:	X-Treme 37	- best Caribbean Yacht CSA
2017:	G-Force Yachts	- winner 2017 logistics, warehouse & supply chain Award, UK
2017:	X-Treme 37	- winner CSA2 class Commodores Cup, Caribbean
2017:	X-Treme 37	- 3 <sup>rd</sup> place CSA2 class Heineken Regatta, Caribbean
2017:	X-Treme 37	- 3 <sup>rd</sup> place CSA class Round Tortola Race, Caribbean
2017:	X-Treme 37	- 3 <sup>rd</sup> place CSA1 Peters & May Round Antigua Race, Caribbean
2017:	X-Treme 26	- 2 <sup>nd</sup> place Mango Bowl regatta, CSA Racing class, Caribbean
2018:	X-Treme 37	- 3 <sup>rd</sup> place CSA1 class Commodore's Cup, Caribbean
2018:	X-Treme 37	- 3 <sup>rd</sup> place CSA1 Heineken Regatta, Caribbean
2018:	X-Treme 37	- 3 <sup>rd</sup> place CSA1 BVI Spring Regatta, Caribbean
2018:	X-Treme 37	- 2 <sup>nd</sup> place CSA4 Antigua Sailing Week, Caribbean
2018:	X-Treme 37	- 2 <sup>nd</sup> place ORC Aegean Rally, Greece
2018:	X-Treme 26	- 2 <sup>nd</sup> place TCF3 Semaine du soir de Fournex, Geneva Lake, Switzerland





## G-Force Yachts

### Administration:

Nassaulaan 48a  
9717 CL Groningen  
The Netherlands

### Production:

Carrer de Carlos Gomes 8  
46740 Carcaixent (Valencia)  
Spain

T : +31 50 720 03 41

E : [info@g-forceyachts.com](mailto:info@g-forceyachts.com)

W : [www.g-forceyachts.com](http://www.g-forceyachts.com)



**G-Force<sup>®</sup>**  
**YACHTS**